

Direction for use of the device



- for subcutaneous drug administration -

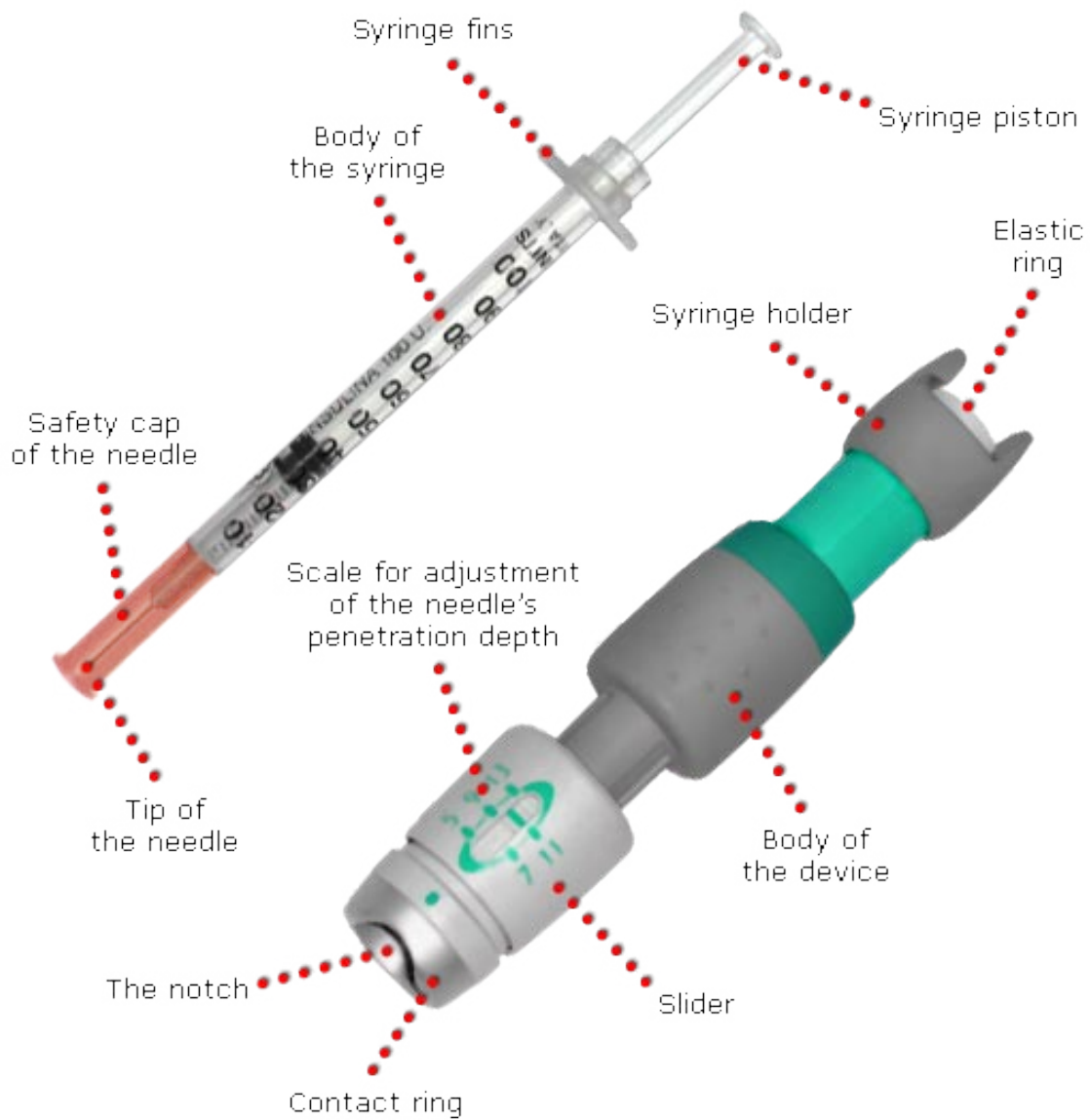
GET TO KNOW [THE PARTS OF THE DEVICE AND THE SYRINGE.](#)

[Preparation >](#)

[Adjustment >>](#)

[Administration of drugs >>>](#)

JVB Injectin® - The parts of the device and the syringe



Preparation

1

Draw the prescribed drug dose out of the bottle and into the syringe.



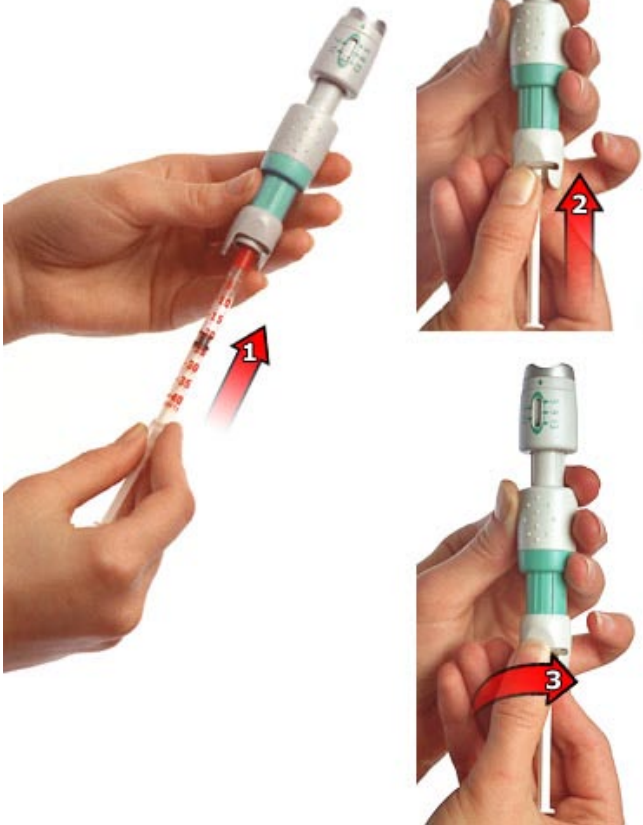
2

Displace air from syringe. Put the safety cap of the needle onto the syringe.



3

Pull the syringe into the device (arrow 1). Using the syringe fins thrust the elastic ring all the way in the direction of the (arrow 2), and then, by turning the syringe fins clockwise (arrow 3), lock the syringe against the device.

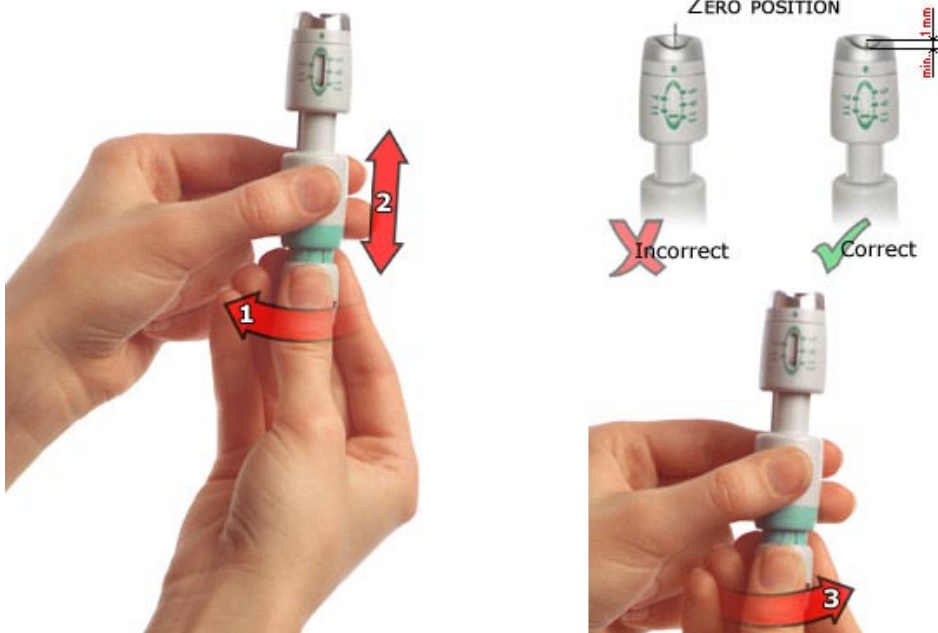


4

Removal of the safety cap of the needle.

Thrust the slider with scale downwards, until a "click" (arrow 1) is heard. Remove the safety cap of the needle by shifting it in the direction (arrow 2). By pressing in the direction (arrow 3), place the slider with scale into the initial position, when you are supposed to hear a "click" again.

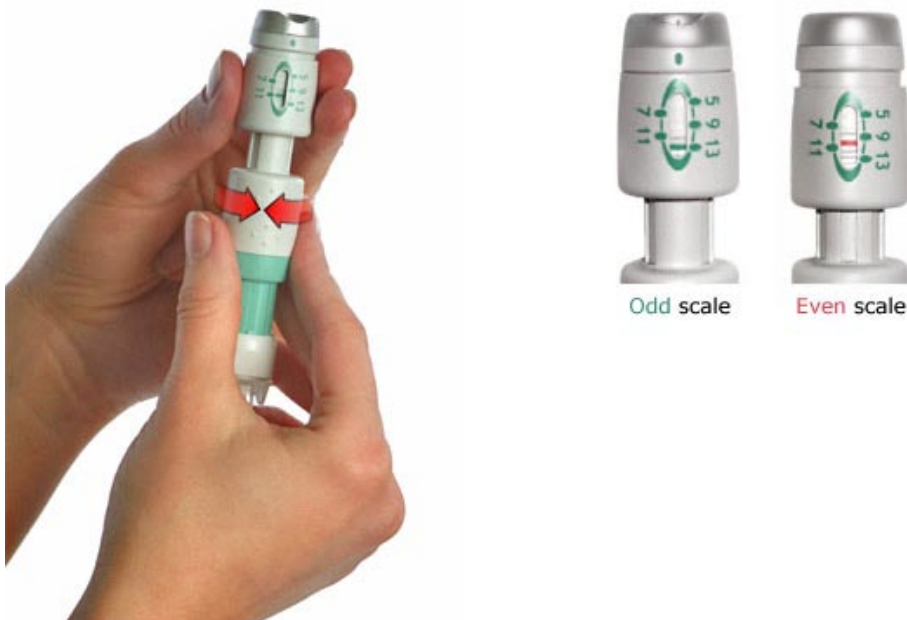
Adjustment



5

Adjustment of the syringe and the tip of the needle toward the device. Zero position. Using one hand you should hold the body of the device, turn the notch on the contact ring toward yourself, and by turning the syringe holder with the other hand counter-clockwise (arrow 1), unlock the syringe holder. The syringe holder is unlocked when you hear a "click".

By longitudinal shift of the syringe holder (arrow 2), bring the tip of the needle into the zero position i.e. 1 mm above the notch of the contact ring (the position "correct" in the picture) and in that position, by turning the syringe holder clockwise (arrow 3), lock the syringe holder. When you hear the "click" sound, the syringe holder is locked. The adjustment is repeated only when changing the type of syringe or needle.



6

Precise adjustment of the needle's penetration depth into the tissue.

Using one hand hold the slider with scale turned toward yourself, while holding the body of the device with the other hand. By rotating the body of the device adjust the required needle penetration depth into the tissue by setting the line on the scale, within the range

from 4 mm to 13 mm. Odd figures of penetration depths are set by the green, while even figures are set by the red line (see the picture).

Example: The needle penetration depth of 10 mm is achieved by setting the red line between the numbers 9 and 11 on the scale. The needle penetration depth of 13 mm is achieved by setting the green line on the number 13.

Consult your physician, which needle penetration depth into the tissue is necessary, depending on the spot of drug administration.

Administration of drugs

7 Slowly lean the contact ring of the device against the skin (see the picture).





8

Press the device downwards in the direction of the arrow - you will hear a "click". The needle has entered the tissue without your seeing it.



9
By slow pressing the syringe piston all the way, in the direction of the arrow, inject the drug.





10

Upon the completion of drug injection, detach the device from the skin in the direction of the arrow, simultaneously turning the contact ring of the device downwards – you will hear a “click”.



11

Unlock the syringe by turning the syringe fins counter-clockwise (arrow 1). Take the syringe out of the device in the direction of the (arrow 2). Place the device back into the box.

